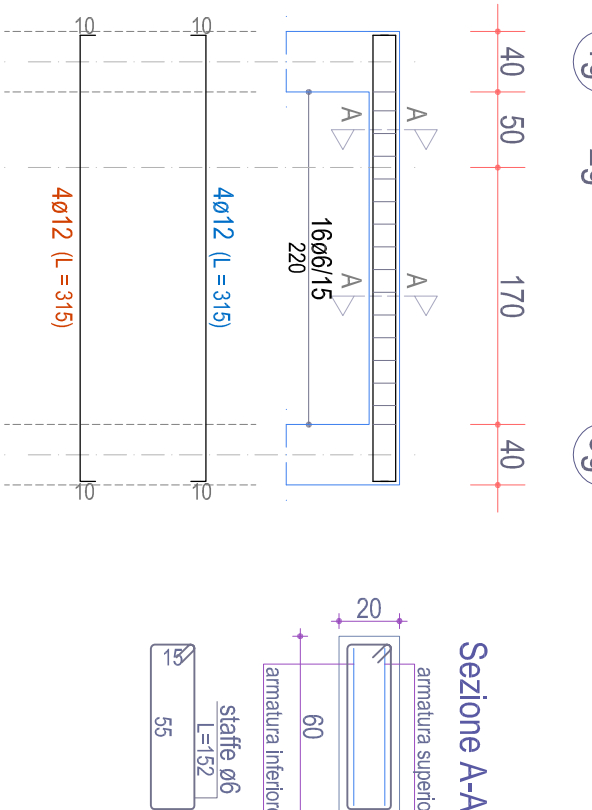


Il progettista Arch. Nazario Celsa Arch. Nazario Celsa Via Ippolito Nievo, 154 71121 Foggia - telefono 0884/2000563	Il responsabile unico del procedimento e Verificatore del Progetto (Resp. Ufficio Calcoli ARCA Capitanata) Ing. Francesco Sisti
	Il datatore dell'area Edilizia Ing. Vincenzo Di Lorenzo

TAVOLA	ESECUTIVI STRUTTURE BLOCCO "AA" STATO ATTUALE TRAVI PIANO NERVATURE	SCALA 1:50 DATA
ACQUADORNAMENTI	L'IMPERIA	L'OPERATORE DELL'AVCOM
60		

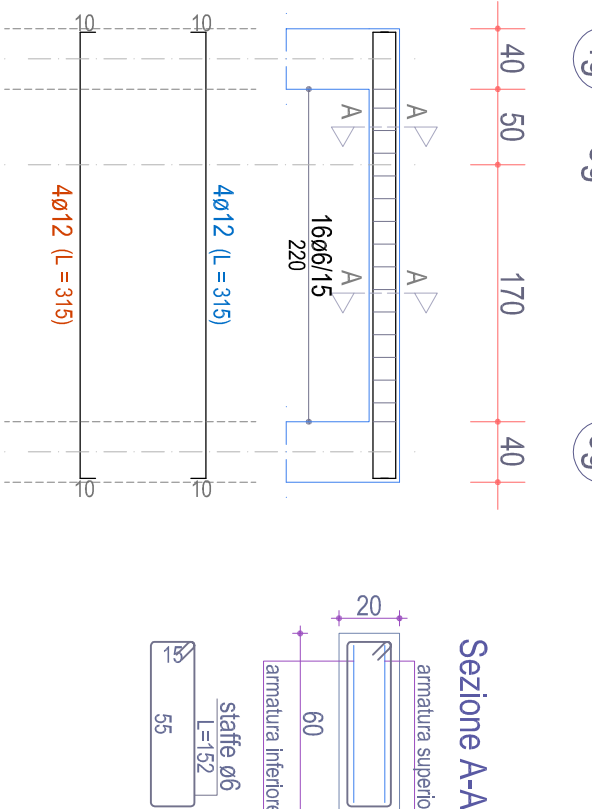
TRAVE 19-29-39 (esistente)

Piano Nervi



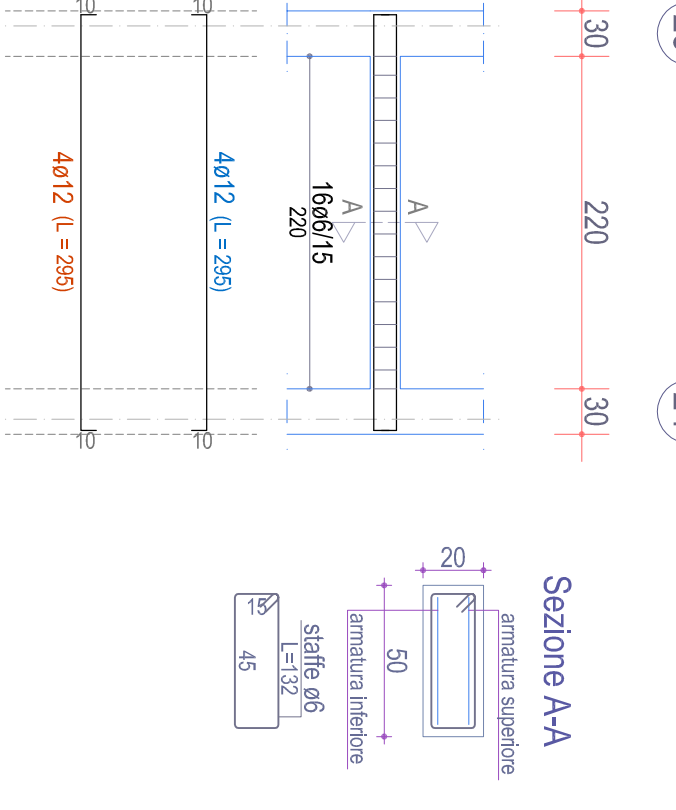
TRAVE 49-59-69 (esistente)

Piano Nervi



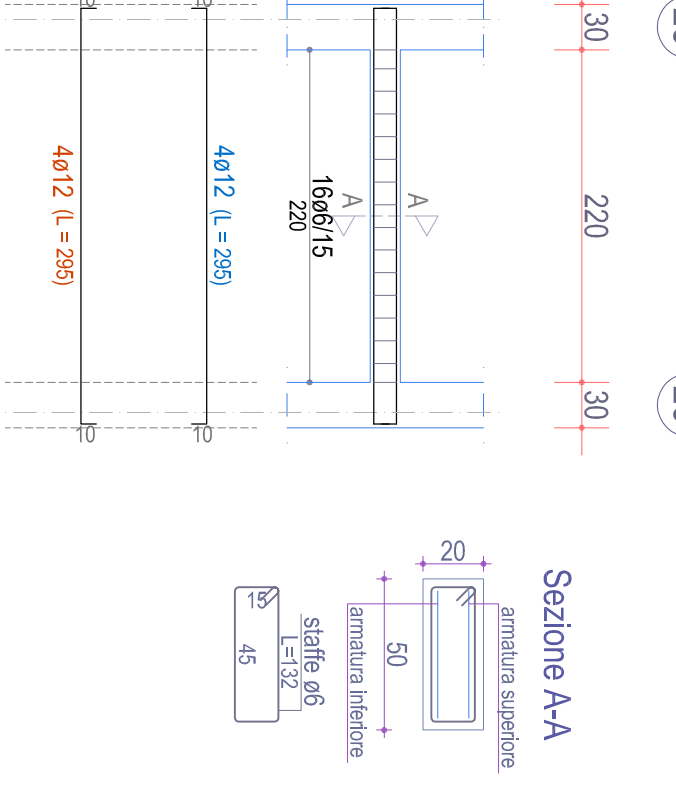
TRAVE 23-24 (esistente)

Piano Nervi



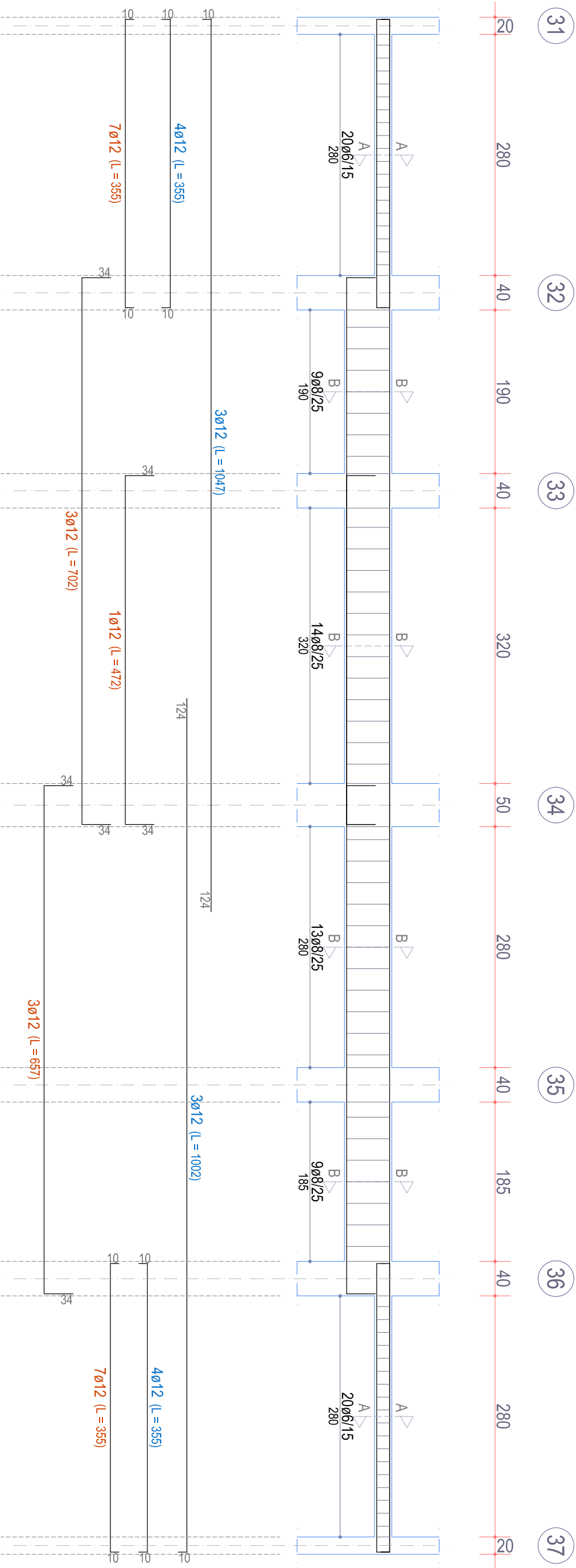
TRAVE 25-26 (esistente)

Piano Nervi



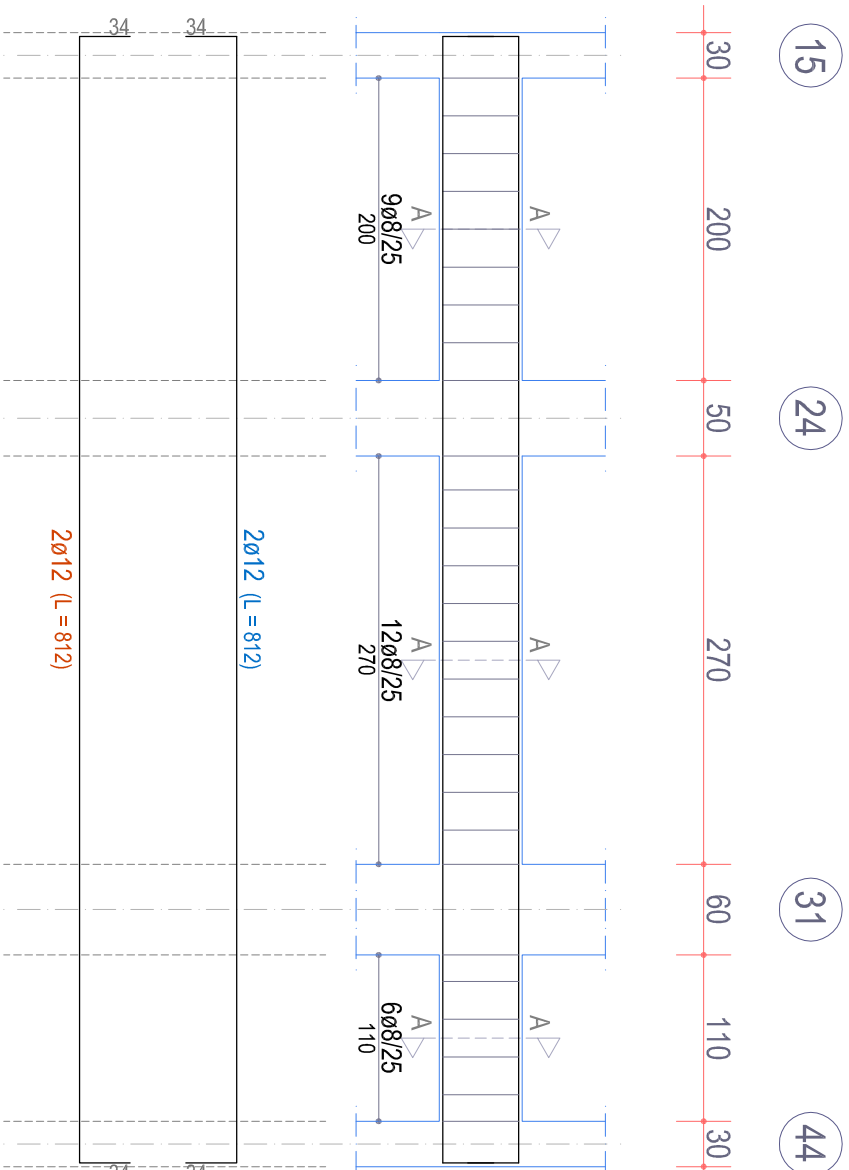
TRAVE 31-32-33-34-35-36-37 (esistente)

Piano Nervi



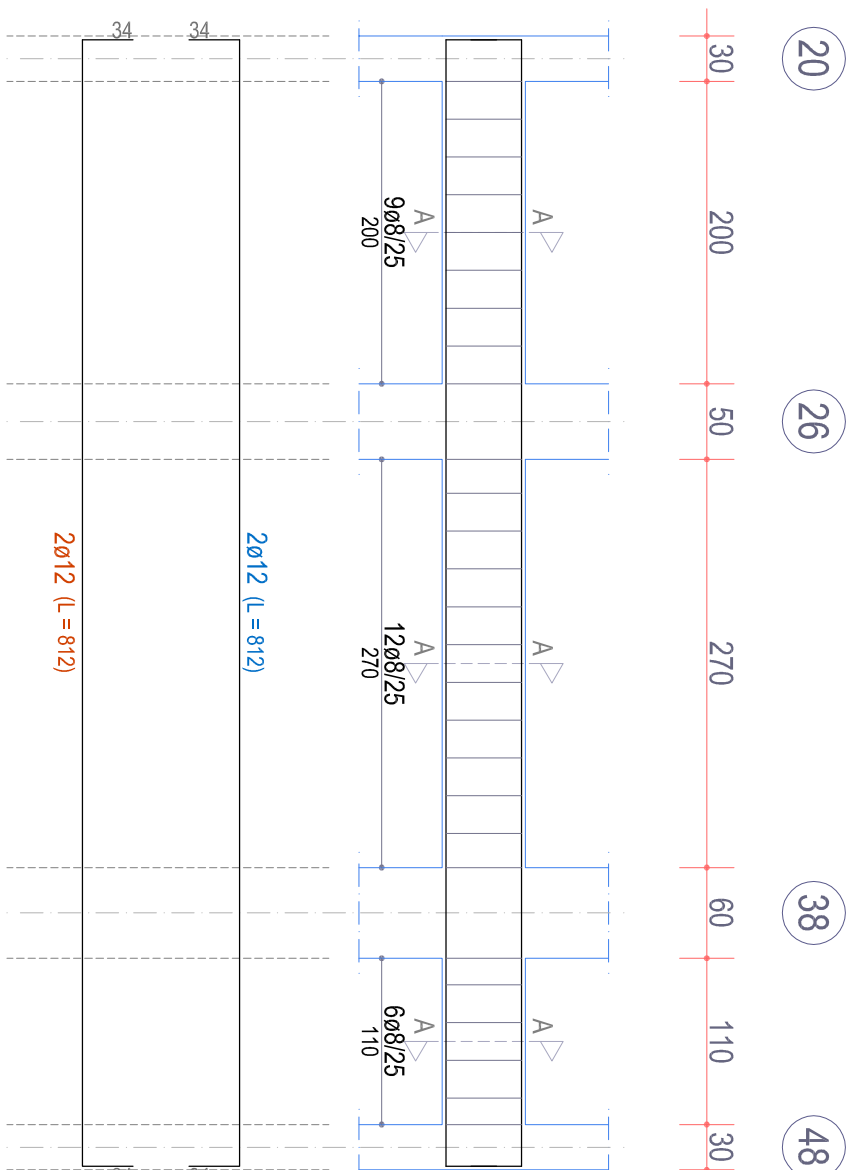
TRAVE 15-24-31-44 (esistente)

Piano Nervi



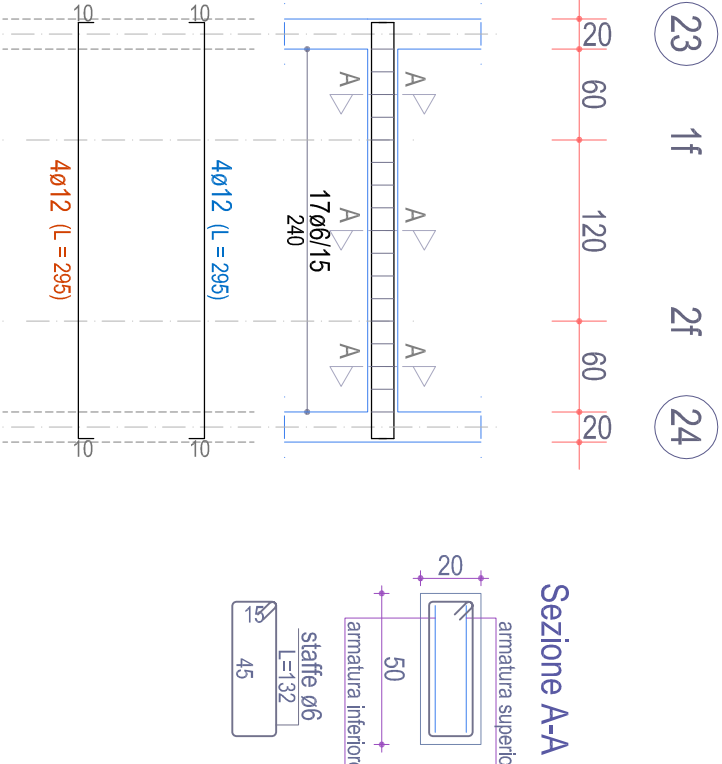
TRAVE 20-26-38-48 (esistente)

Piano Nervi



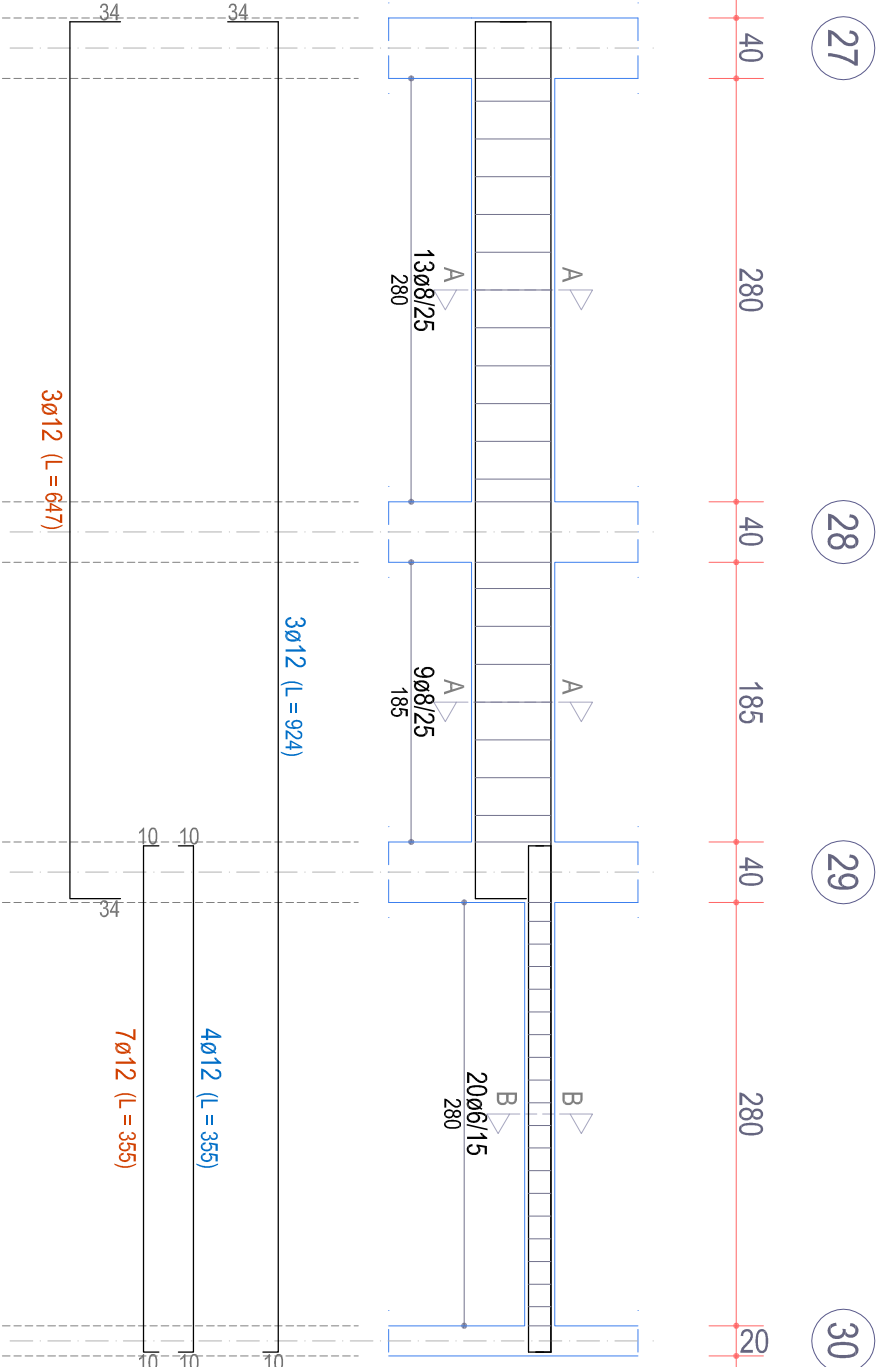
TRAVE 23-11-21-24 (esistente)

Piano Nervi



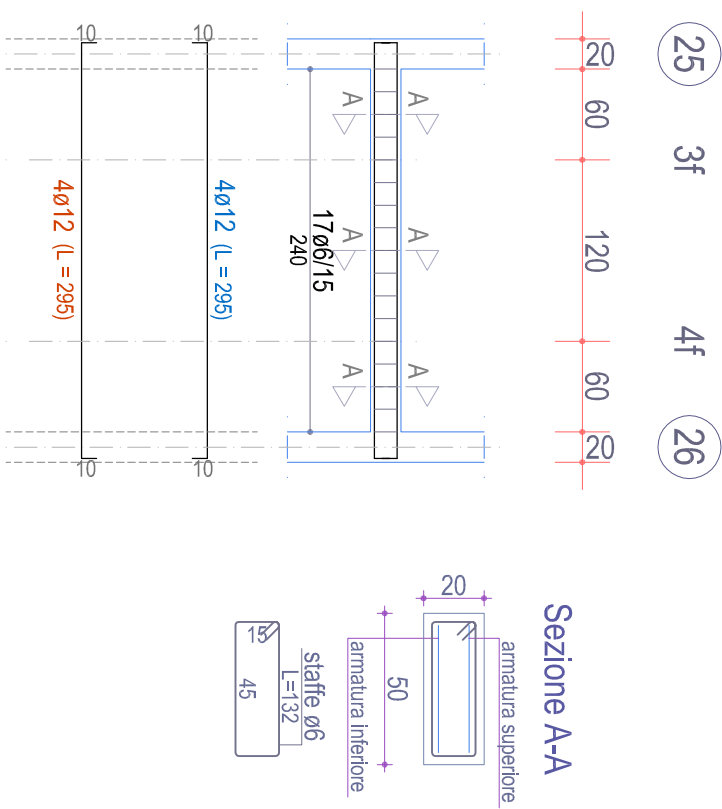
TRAVE 27-28-29-30 (esistente)

Piano Nervi



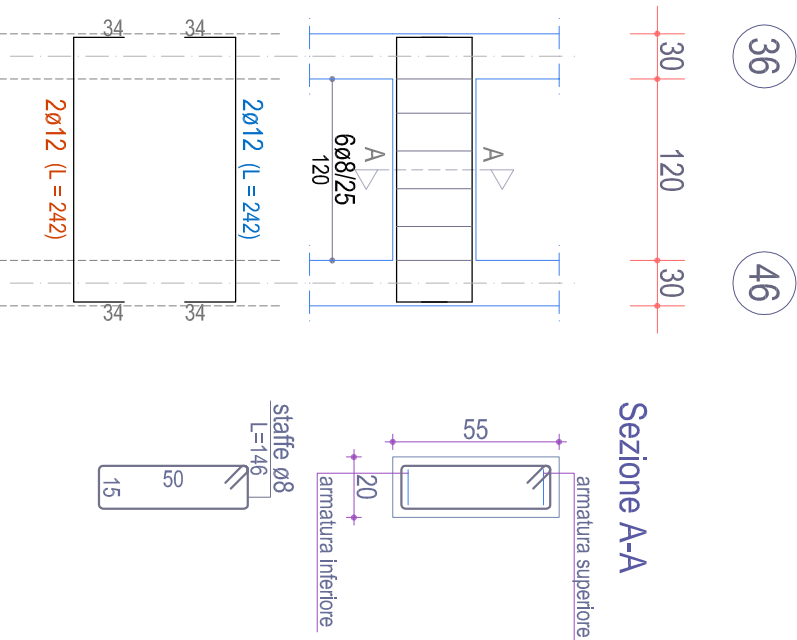
TRAVE 25-31-41-26 (esistente)

Piano Nervi



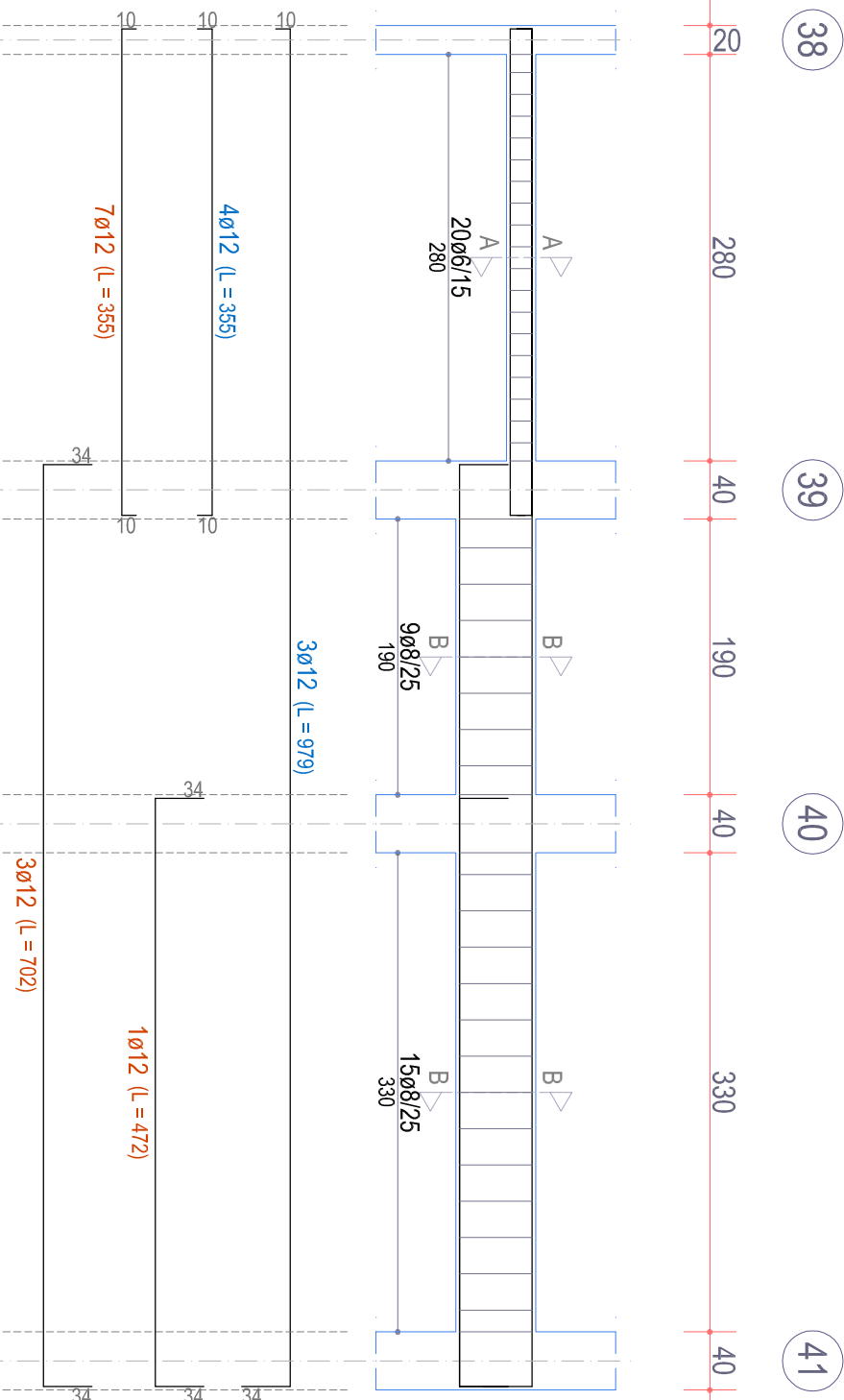
TRAVE 36-46 (esistente)

Piano Nervi



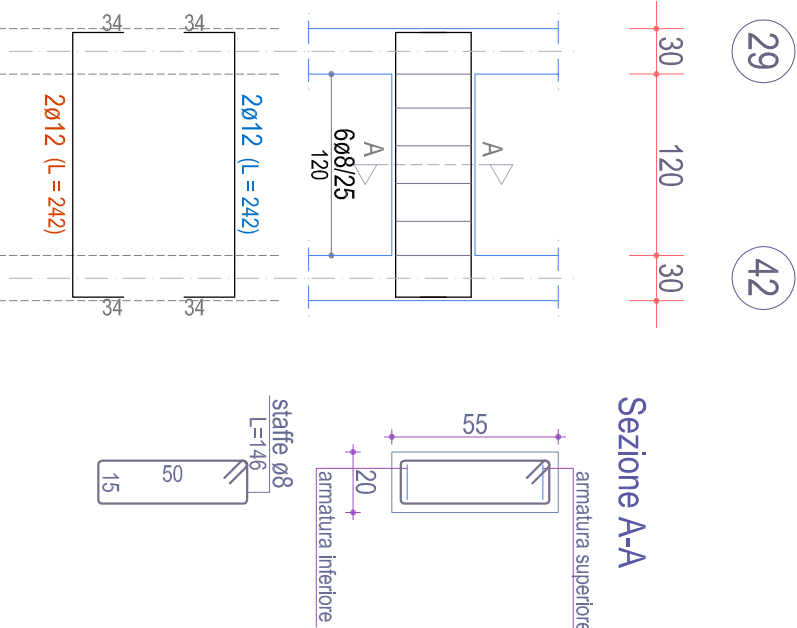
TRAVE 38-39-40-41 (esistente)

Piano Nervi



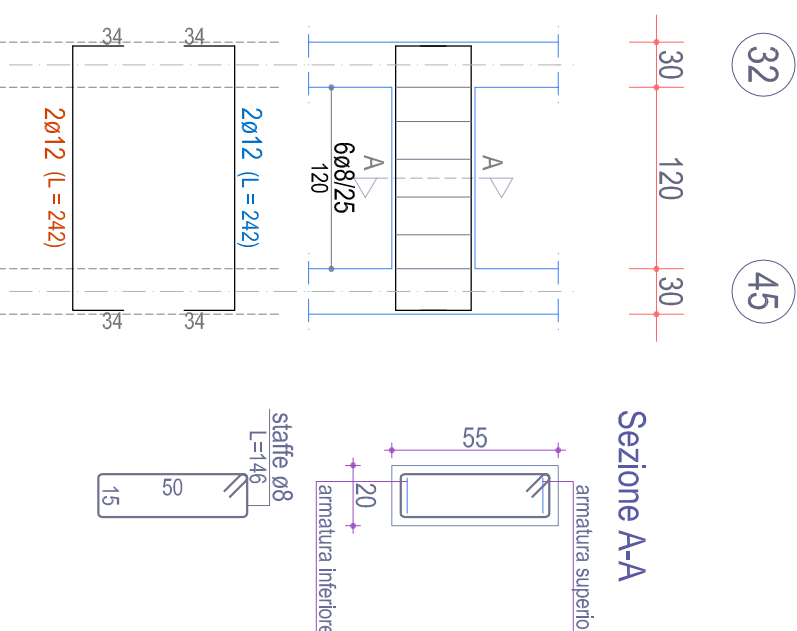
TRAVE 29-42 (esistente)

Piano Nervi



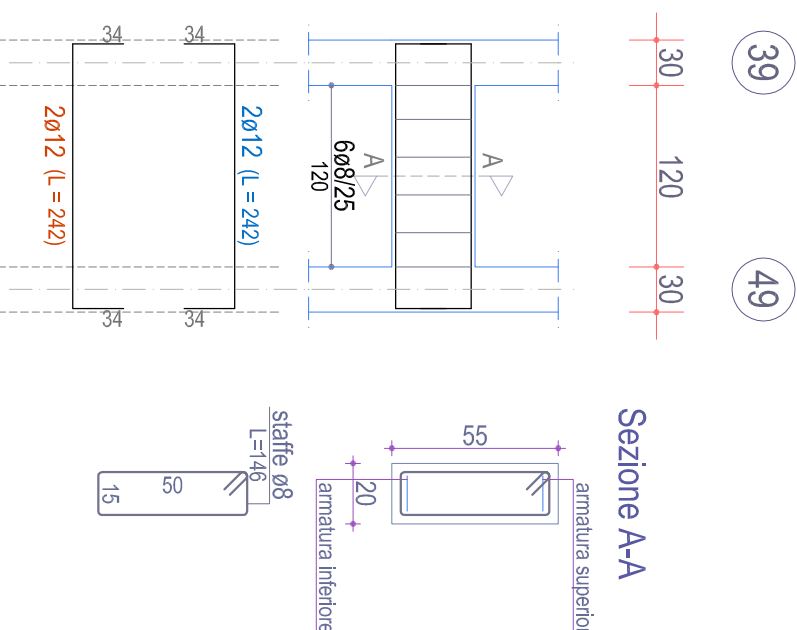
TRAVE 32-45 (esistente)

Piano Nervi



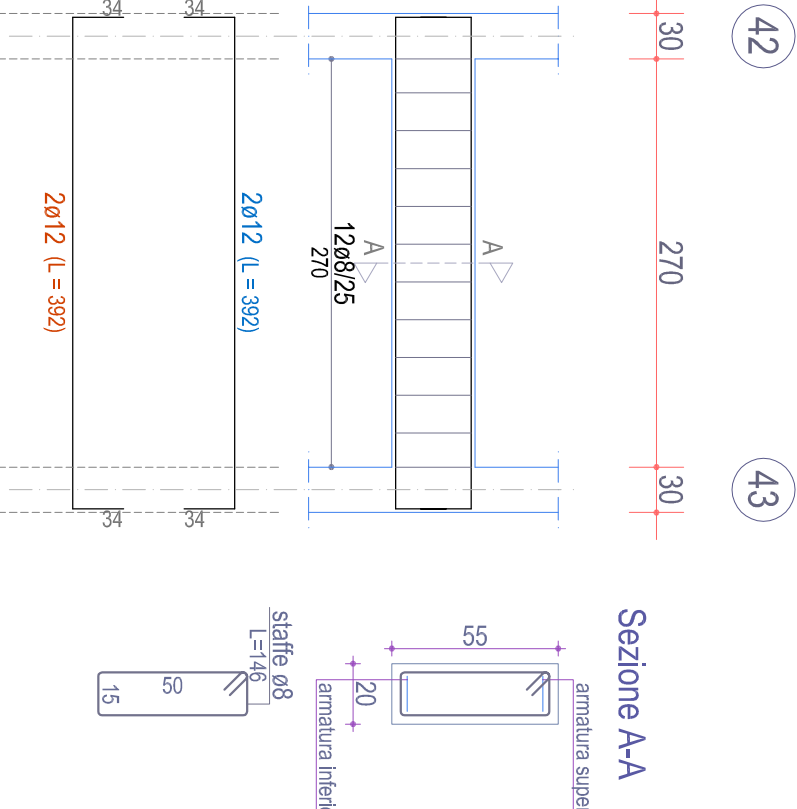
TRAVE 39-49 (esistente)

Piano Nervi



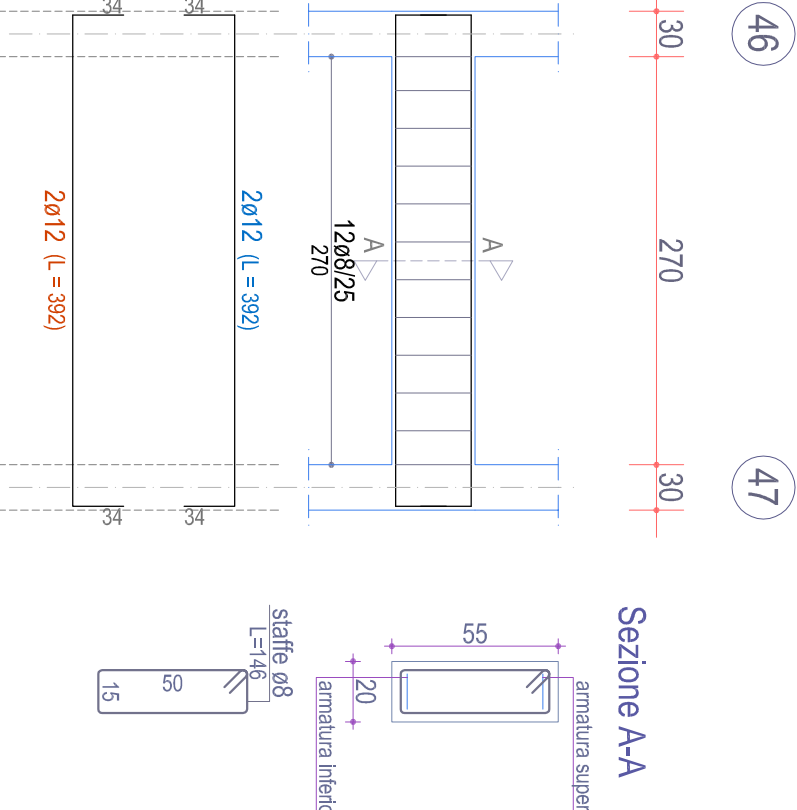
TRAVE 42-43 (esistente)

Piano Nervi



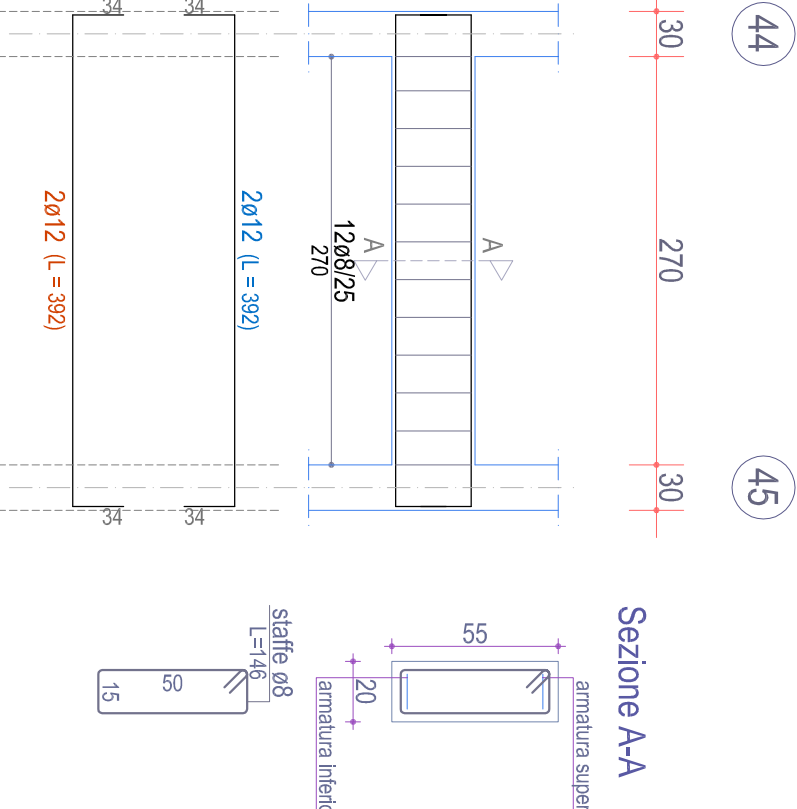
TRAVE 46-47 (esistente)

Piano Nervi



TRAVE 44-45 (esistente)

Piano Nervi



TRAVE 48-49 (esistente)

Piano Nervi

